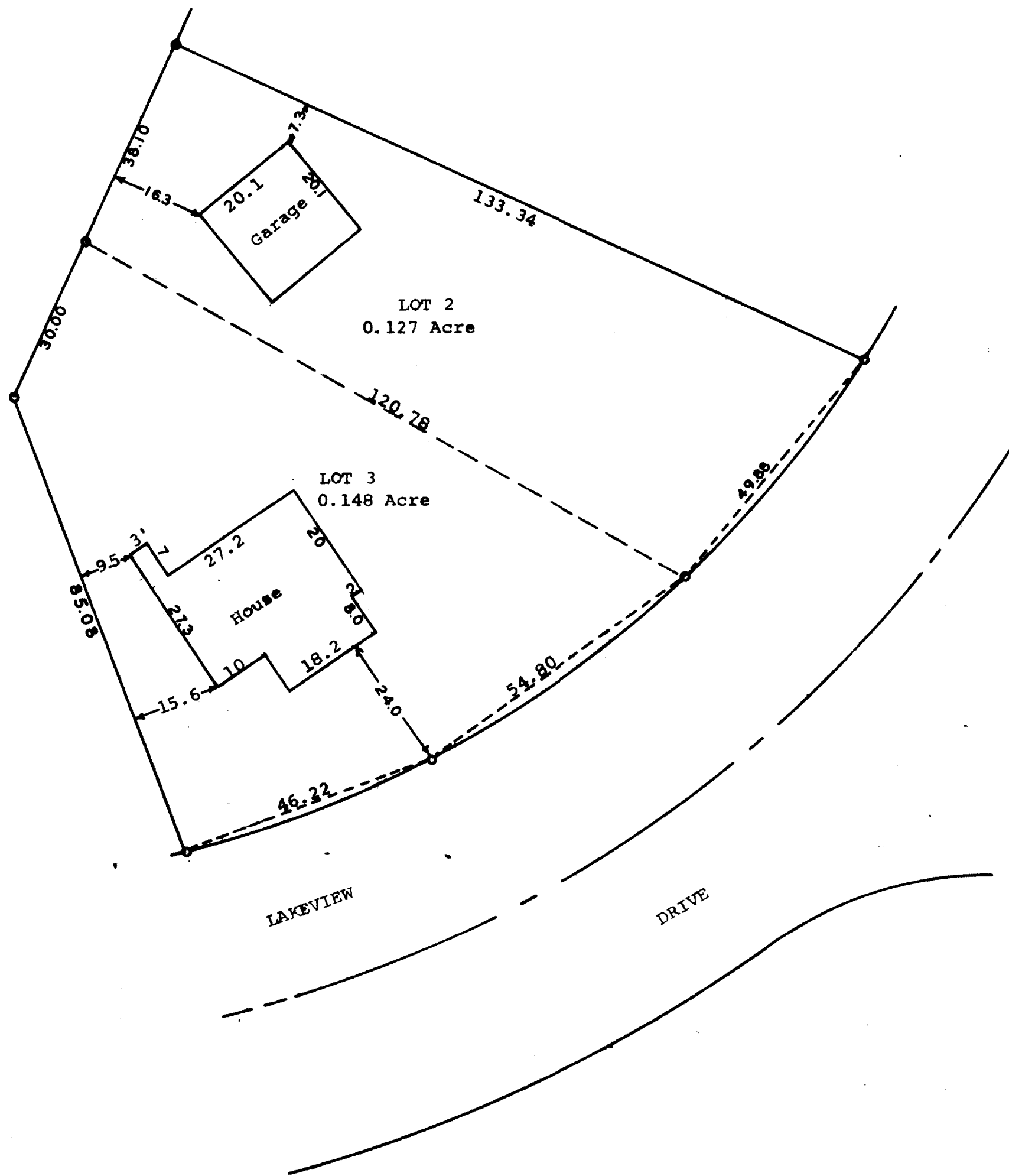


GEORGE T. DUNHAM
SURVEYING & SUBDIVIDING
DELAVER, WISCONSIN



Scale - 1" = 20'
○ = Iron Pipe

STATE OF WISCONSIN)
COUNTY OF WALWORTH) SS

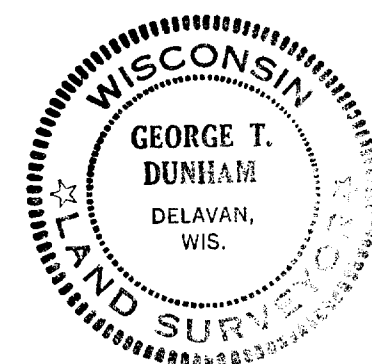
I, George T. Dunham, Surveyor, certify that I have surveyed
the property described as follows,

Lots 2 and 3 in Block 4 of Lake View Park, a subdivision
located in Section 16, T 1 N, R 17 E, Walworth County,
Wisconsin,

and that the above plat is an accurate survey and a true representation
thereof and correctly shows the exterior boundary lines and location
of buildings on said property and the correct measurements thereof.
August 7, 1973

ILVR-17A

George T. Dunham
George T. Dunham, Surveyor



117-402